

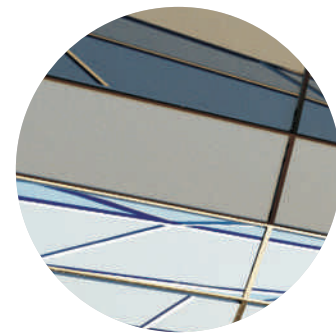


Aspirants today. Architects tomorrow.

Approved by Council of Architecture

Find your space in the art of moulding spaces

Impact School of Architecture is an initiative by Impact group of Educational Institutions to mentor some of the brilliant minds into architects and enable them play a lead role in the work force of the nation. ISA offers Graduate Programmes in Architecture approved by VTU, the largest technological university in India. The courses are conducted under the guidance of experienced professionals who have a distinguished presence in both academics and the industry.



Impact group of Institutions was envisioned as an initiative to bridge the gap between the need of skilled manpower and the scarcity of human resources that the nation faces today. Initially the group focused on creating skilled engineers who are equipped with an industry-oriented practical approach. Apart from churning out professionals, the group also believed in instilling core-values that bind them with a commitment towards the nation as a whole. It was, in other words, building people who build the nation. Later the group expanded its horizons and forayed into specific domains like Polytechnic as well as other spheres like Applied Sciences, Education, Management etc where the need for professionally trained manpower was felt. Today the group has over five prestigious colleges, institutes and schools under its aegis; each unfailingly contributing to create a league of professionals.

All the institutes and schools of IGI boast of a safe and secure campus amidst rich greenery. With an infrastructure that is comparable only with the best in India, a faculty who have a distinguished presence in diverse industry-sectors; IGI has made possible an environment congenial to a collaborative learning experience



Vision

With over three decades of experience as educationists and mentors, our vision is to churn out and out and out individuals from aspirants, instill skill sets and values that make them contribute to the nation at large.

Mission

Transform lives through education. IMPACT's mission was to provide a gateway to opportunities for talented and determined students, including those with lesser financial means. We build on this mission, making sure our students acquire the skills they will need in the global market-place.

Values

We transform lives by creating and sharing knowledge, while instilling values that prepare leaders for tomorrow's world. Our vision and values guide our teaching, research and school management.

Excellence: We value excellence in teaching, research and school management.

Creativity: We value innovation and creative thinking.

An entrepreneurial culture: We value effective decision-making and entrepreneurial implementation of ideas.

Ethical behavior and respect for others: We value ethical practice and diverse perspectives.

Community Engagement: We value a progressive relationship with all stakeholders and the community

The Impact approach to Architecture

Imparting knowledge of Architecture, for us is about fuelling the spirit of enquiry, enabling our students with the power to think on their own, identify new avenues and gain insights through practical application. Impact has devised a system that makes every student encounter the practical realities of the industry rather than merely drawing upon accumulated knowledge. Special emphasis is being given to make them aware of the diversity that the field holds for them, thereby encouraging them to tread their own path. An architect of the future, we believe is nothing other than a blend of aesthetics as well as ethics.

Courses

Bachelor of Architecture (B.Arch.)

Five year full time Degree Course of Bachelor of Architecture (B.Arch.)

Recognised by the Council of Architecture, New Delhi and Govt of Karnataka. Affiliated to VTU.

Teaching Leverage

- Excellent and committed faculty
- Augmented coverage of topics
- Counseling and guidance for improving performance
- Placement - Comprehensive training and exposure to students with placement guarantees
- Continuous appraisal of performance to raise competency of students
- Guest lectures by seasoned experts from the corporate world and leading academic circles
- Student advisory services, club and associations
- International student body
- Alumni network

Aminities

- Wi-Fi enabled campus
- Well-stocked library
- Full-fledged labs
- Green Campus which is safe and secure
- Separate hostel for Boys and Girls
- Advanced Auditorium, Seminar Halls and PA systems
- Faculty who are industry-experts
- Flexible, student-centered approach
- Strong placement tie –ups
- Practical, industry-centric approach

Green Campus

We present you an opportunity to learn and live in a serene lush green environment. ICEAS is nestled in the green, in a sylvan milieu which provides a tranquil environ to study. The Eco-efficient campus represents the vision and world view of ICEAS ascertaining the act that nobody knows future better than us.



Facilities

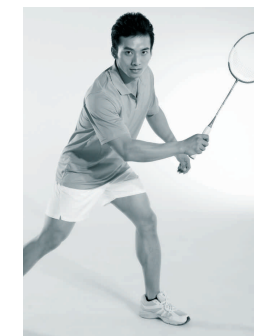
ISA hosts a range of facilities for aspiring architects to learn and stay. Full fledged classrooms equipped with the latest PA systems, equipments, IT enabled simulation and representation devices, latest software and a well-stocked library- all these only come as an additional edge to an eco -friendly, serene campus where nature stirs up your imagination. While the hostels are well equipped, hygienic and secure, special care has been given to provide additional facilities like ATM, Doctor's visit etc.

Hostel

IAS is home to many students from across the country and the world. There are separate hostels for boys and girls. The hostel mess provides predominantly vegetarian food. Breakfast, Lunch and Dinner are served in tiffin carriers to individual students. ISA ensures that the hostels are well-managed and meet the needs of its students.

Transport Facilities

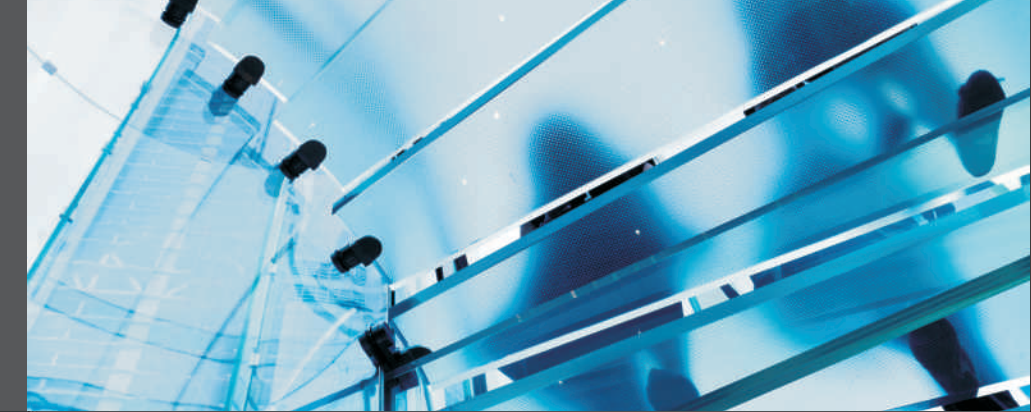
The IMPACT College of Engineering Provides Transportation for the benefit of students from various parts of Bangalore City,



- Multi Gym
- Indoor Sports
- Out Door Sports
- Jogging track
- Restaurant



Visvesvaraya Technological University



VTU is one of the biggest Technological University in India, having 186 colleges affiliated to it with under graduate course in 28 disciplines and PG Programme in 71 disciplines. The intake at UG level is about 67100 students and at the PG level it is about 12666 students. The University has 13 QIP centre in various affiliated colleges and 16 extension centres for offering PG programmes. There are over 2305 departments recognized as research centres. At present over 1800 students / faculty are registered for Ph.D degree and over 180 students are registered for their Msc.. (Engg). This year the University is awarding 120 Ph.D Degrees and 50 M.Sc (Engg) Degrees. The Faculty has published around 694 research publications in the year 2009-10. Sixteen from among the affiliated colleges were recognized to get assistance under the World Bank supported. TEQIP program in the I Phase. This year as a novel measure academic autonomy has been provided to 17 affiliated Colleges after due processes.

The University has very successfully achieved the tremendous task of bringing various colleges affiliated earlier to different Universities, with different syllabi, different procedures and different traditions under one umbrella. The University implemented common curriculum for UG in 1998 and revised syllabi again in 2002 for all the courses and uniform procedures were adopted. As a further step in standardization, the subjects & syllabi of related branches are being made common upto the fourth semester. The University has already revised the syllabus of MBA with effect from the academic year 2001-2002 and has now revised the syllabi of all M.Tech courses & MCA. The University plans to bring in further flexibility in the curriculum, so that any changes or revisions may be introduced particularly with respect to electives, as and when the technology changes or the need arises.

The first batch consisting of approximately 13,000 students of Under Graduate B.E. / B.Tech. students who were admitted in the academic year 1998-99 came out of the portals of this University as graduates during the month of July 2002.

The University has MOU's with various leading organisations like IBM, INTEL Asia Electronics Inc., Ingersoll-Rand (India) Ltd., Bangalore and Microsoft. These MOU's will help in various ways to train the faculty, conduct teachers training workshops, student projects and enable the colleges affiliated to the University to get software at a highly subsidized rate. Already Intel has



arranged many training programmes for Engineering College Teachers. 153 teachers were trained by Microsoft. These MOU's will further the Technological growth of the state. Many of the industries are showing keen interest in participating in the curricular activities of the University and the University is negotiating with them for such participation.

The DMP shall supply the latest technical know-how for the said Joint Venture (IGIT) comprising of Training, literature, Videos and Power point Demonstrations for Dynamic and Static Moulding Technologies, Cold Welding Methods, Capillary Metal Impregnation Techniques, Metal Preservation and Conservation Methods and metal making industries of high precision.

VTU proposes to have worldwide electronic presence by establishing data network interconnecting the VTU campus at Machche, four regional offices and all the affiliated colleges of VTU in a secure private network and open up access to this network to the worldwide communities for collaborative learning using Internet technology. In this direction, a Campus wide network at Machche with a fiber optic backbone, having about 1000 data access points interconnecting all the existing and proposed buildings is being set up. The campus network uses the state of art network tiered architecture with Edge and Core switches and scalable distributed network topology. This network will meet the computing demand of PG students in the campus, provide eLearning environment, access to digital library, support examination, administration work and more importantly have sufficient bandwidth for Videoconferencing from any network access point.

Further, the VCONET: VTU Colleges Network will enable sharing of faculty expertise among colleges, collaboration among peer groups, even out digital disparity among rural and urban engineering colleges, provide infrastructure for online examination system, portal to different digital libraries all over the world and support many more innovative applications on the net expected in future. The University intends to start Nodal Training Institute for training the staff of colleges similar to the staff training colleges functioning in other Universities.



Approved by Council of Architecture

www.isoa.in



impact

**IMPACT GROUP OF
INSTITUTIONS**

Sahakara Nagar South,
Bangalore - 560 092.
Tel.: +91 80 2272 0805, 2333 0702
Email: admissions@impactedugroup.in

www.impactedugroup.in

